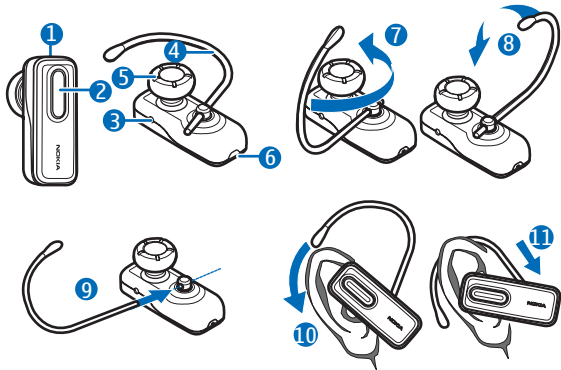


# Nokia Bluetooth Headset BH-209

---



## DECLARATION OF CONFORMITY

Hereby, NOKIA CORPORATION declares that this HS-97W product is in compliance with the essential requirements and other relevant provisions of Directive 1999/5/EC. A copy of the Declaration of Conformity can be found at [http://www.nokia.com/phones/declaration\\_of\\_conformity/](http://www.nokia.com/phones/declaration_of_conformity/).

# CE 0560

© 2007 Nokia. All rights reserved.

Reproduction, transfer, distribution or storage of part or all of the contents in this document in any form without the prior written permission of Nokia is prohibited.

Nokia and Nokia Connecting People are registered trademarks of Nokia Corporation. Other product and company names mentioned herein may be trademarks or tradenames of their respective owners.

Bluetooth is a registered trademark of Bluetooth SIG, Inc.

Nokia operates a policy of ongoing development. Nokia reserves the right to make changes and improvements to any

of the products described in this document without prior notice.

Under no circumstances shall Nokia be responsible for any loss of data or income or any special, incidental, consequential or indirect damages howsoever caused.

The contents of this document are provided "as is". Except as required by applicable law, no warranties of any kind, either express or implied, including, but not limited to, the implied warranties of merchantability and fitness for a particular purpose, are made in relation to the accuracy, reliability or contents of this document. Nokia reserves the right to revise this document or withdraw it at any time without prior notice.

The availability of particular products may vary by region. Please check with the Nokia dealer nearest to you.

Unauthorized changes or modifications to this device may void the user's authority to operate the equipment.

### Export Controls

This device may contain commodities, technology or software subject to export laws and regulations from the US and other countries. Diversion contrary to law is prohibited.

# Introduction

---

The Nokia Bluetooth Headset BH-209 allows you to make and receive calls while on the move. You can use the headset with compatible mobile devices that support Bluetooth wireless technology.

Read this user guide carefully before using the headset. Also read the user guide for your mobile device, which provides important safety and maintenance information. Keep the headset out of reach of small children.

## Bluetooth wireless technology

Bluetooth wireless technology allows you to connect compatible devices without cables. The phone and the headset do not need to be in line of sight, but they should be within 10 meters (33 feet) of each other. Connections may be subject to interference from obstructions,

such as walls, or other electronic devices.

The headset complies with the Bluetooth Specification 2.0 + EDR that supports the Headset Profile 1.1 and Hands-Free Profile 1.5. Check with the manufacturers of other devices to determine their compatibility with this device.

There may be restrictions on using Bluetooth technology in some locations. Check with your local authorities or service provider.

# Get started

---

The headset contains the following parts shown on the title page: green indicator light (1), multifunction key (2), charger connector (3), earloop (4), earpiece (5), and microphone (6).

Before using the headset, you must charge the battery and pair the headset with a compatible mobile device.

Parts of the headset are magnetic. Metallic materials may be attracted to the headset. Do not place credit cards or other magnetic storage media near the headset, because information stored on them may be erased.

## Chargers

Check the model number of any charger before using it with this headset. The headset is intended for use with the AC-3, AC-4, and DC-4 chargers.



**Warning:** Use only chargers approved by Nokia for use with this particular enhancement. The use of any other types may invalidate any approval or warranty and may be dangerous.

When you disconnect the power cord of any enhancement, grasp and pull the plug, not the cord.

## Charge the battery

The headset has an internal, nonremovable, rechargeable battery. Do not attempt to remove the battery from the device, as you may damage the device.

1. Connect the charger to a wall outlet.
2. Connect the charger cable to the charger connector. The indicator light is on while charging. It may take a while before charging starts. If

charging does not start, disconnect the charger, plug it in again, and retry. Charging the battery fully may take up to 2 hours.

3. When the battery is fully charged, the indicator light turns off. Disconnect the charger from the headset and the wall outlet.

The fully charged battery has power for up to 6 hours of talk-time or up to 150 hours of standby time.

However, the times may vary with different compatible Bluetooth devices, usage settings, usage styles, and environments.

When battery power is low, the indicator light quickly flashes twice about every 3 seconds.

### Switch the headset on or off

To switch on, press and hold the multifunction key until the headset beeps four times and the indicator light is displayed.

To switch off, press and hold the multifunction key for about 4 seconds. The headset beeps four times, and the indicator light is displayed briefly.

### Pair the headset

1. Ensure that your phone is switched on and the headset is switched off.
2. Press and hold the multifunction key until the indicator starts to flash quickly.
3. Activate the Bluetooth feature on the phone, and set the phone to search for Bluetooth devices.
4. Select the headset from the list of found devices.
5. Enter the passcode 0000 to pair and connect the headset to your phone. In some phones you may need to make the connection separately after pairing. You only need to pair the headset with your phone once.

If the pairing is successful, the headset appears in the phone menu where you can view the currently paired Bluetooth devices. When the

indicator light flashes twice every 5 seconds, the headset is connected to the mobile device and ready for use.

## Basic use

---

### Place the headset on the ear

To use the headset with the supplied earloop, insert the earloop into the small opening at the back of the headset (9).

Slide the earloop over your ear (10), and gently plug the earpiece into your ear. Push or pull the earloop to set its length. Set the headset so that it points toward your mouth (11). To use the headset on the left ear, rotate the earloop so that the loop is to the left of the Nokia logo (Figures 7 and 8).

### Call handling

To make a call, use your phone in the normal way when the headset is connected to your phone.

If your phone supports last number redialing with the headset, press the multifunction key twice when no call is in progress.

If your phone supports voice dialing with the headset, press the multifunction key when no call in progress, and proceed as described in the user guide of your mobile device.

To answer or end a call, press the multifunction key. To reject the call, press and hold the multifunction key for about 2 seconds.

To adjust the volume, use the volume keys on your mobile device.

To switch the call between the headset and a compatible device, press and hold the multifunction key for about 2 seconds.

## Battery information

---

Your device is powered by a rechargeable battery. The battery can be charged and discharged hundreds of times, but it will eventually wear out. Recharge your battery only with Nokia approved chargers designated for this device.

Unplug the charger from the electrical plug and the device when not in use. Do not leave a fully charged battery connected to a charger, since overcharging may shorten its lifetime. If left unused, a fully charged battery will lose its charge over time. Never use any charger that is damaged.

### Reset

To reset the headset if it stops functioning, although it is charged, plug the headset into a charger.

Leaving the device in hot or cold places, such as in a closed car in summer or winter conditions, will reduce the capacity and lifetime of the battery. Always try to keep the battery between 15°C and 25°C (59°F and 77°F). A device with a hot or cold battery may not work temporarily, even when the battery is fully charged. Battery performance is particularly limited in temperatures well below freezing.

Do not dispose of batteries in a fire as they may explode. Batteries may also explode if damaged.

## Care and maintenance

---

Your device is a product of superior design and craftsmanship and should be treated with care. The following suggestions will help you protect your warranty coverage.

- Keep the device dry. Precipitation, humidity, and all types of liquids or moisture can contain minerals that will corrode electronic circuits. If your device does get wet, allow it to dry completely.
- Do not use or store the device in dusty, dirty areas. Its moving parts and electronic components can be damaged.
- Do not store the device in hot areas. High temperatures can shorten the life of electronic devices, damage batteries, and warp or melt certain plastics.
- Do not store the device in cold areas. When the device returns to its normal temperature, moisture can form inside the device and damage electronic circuit boards.

- Do not attempt to open the device.
- Do not drop, knock, or shake the device. Rough handling can break internal circuit boards and fine mechanics.
- Do not use harsh chemicals, cleaning solvents, or strong detergents to clean the device.
- Do not paint the device. Paint can clog the moving parts and prevent proper operation.

All of the above suggestions apply equally to your device, battery, charger, or any enhancement. If any device is not working properly, take it to the nearest authorized service facility for service.